

SONY



UP-991AD



UP-971AD



UP-991AD/UP-971AD

Hybrid Graphic Printers

The UP-991AD and UP-971AD are compact black and white printers designed for use with both analog and digital radiology imaging systems such as mobile C-arm, ultrasound, cardiac catheterization laboratory and other compatible medical imaging systems.

These printers are successors to the popular Sony UP-990AD and UP-970AD of medical printers. Redesigned and upgraded, it offers several operational and ergonomic enhancements in addition to the smaller design from its predecessors. Usability is further enhanced by an enlarged LCD display panel and joystick for intuitive menu navigation.

They provide high-quality hard copies of still images captured by the imaging system that can then be used as reference prints for patient record purposes or referrals.*

Both the UP-991AD and UP-971AD provide a Multi-picture print mode and panoramic print capability. Additionally, the UP-991AD can store images on a connected USB flash drive and an integrated media cutter is also available.

* The images printed from the UP-991AD and UP-971AD are not to be used for diagnosis.

Printer for C-arm System



Printer for Ultrasound



Products Overview

	UP-991AD	UP-971AD
Roll Paper Width	210 mm (8 1/4 inches)	
USB Flash Drive Storage	●	
Automatic Media Cutter	●	
Analog Video Input	●	●
USB Connector (For medical device)	●	●

Key Features

High Quality Printing

Using Sony's direct thermal printing technology, these printers deliver photo-quality black & white prints with a high resolution of approximately 325 dpi.

High Speed Printing

In standard mode, these printers can deliver a print in approximately 8 seconds.

USB Flash Drive Storage*1

The UP-991AD can store either the printed image or captured video frame on a USB flash drive inserted into the USB port on the front of the printer. Stored images can be in color, provided that the input signal is in color and Color mode (for better B&W printing of color images) is chosen.

Automatic Media Cutter*1

The printer automatically cuts paper to size when printing is completed.

Accepts Both Digital and Analog Video Input Signals

These printers can receive digital as well as analog signals, allowing the printer to support both types of C-arm system. It also can receive signals from two different integrated systems – i.e. analog from a C-arm and digital from an ultrasound system.

More Compact, More Visible

These printers have a compact design with dimensions of approximately 316 (W) x 132.5 (H) x 265 (D) mm (12 1/2 x 5 1/4 x 10 1/2 inches) – 40mm smaller in depth than its predecessor. At the same time, the size of the LCD display panel is increased, and the control panel features a white LED backlight.

Enhanced Operability

All function keys of printers are located on the front panel, allowing easy setup and operation when the printer is installed in a medical cart. In addition, separate knobs on the front panel allow easy adjustment of both contrast and brightness and an auto lock function that prevents inadvertent alteration of settings.

Panoramic Printing

When connected to a digital signal, the printers can produce panoramic prints up to a maximum of 600mm long.

*1 This feature is only available on the UP-991AD.

Multi-picture Modes

As well as printing a single picture, these printers also offer a choice of two-, four- and six-way split printing of images on a single sheet when connected to an analog video signal. The 'Multi' button on the front panel allows quick switching between 'Single-picture' and 'Multi-picture' modes. With digital input signals, the printer can provide two or four split pictures on one sheet (NB: Multi button does not function with digital input).

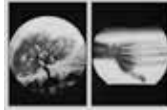
Single-picture Mode

Full

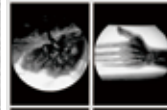


Multi-picture Modes

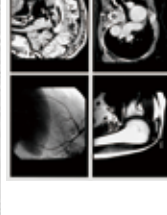
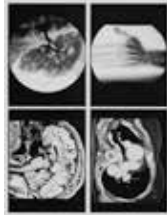
2 Split



6 Split



4 Split

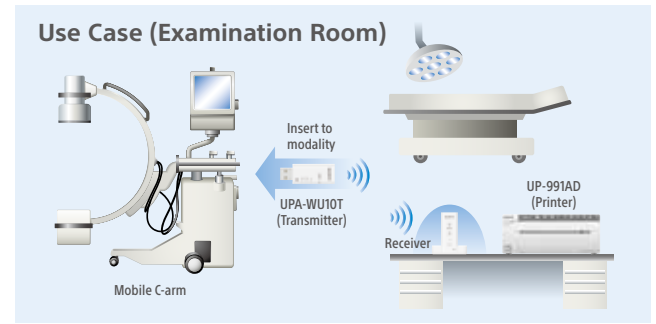


Wireless Printing Capability*1

By using the optional UPA-WU10*2 Wireless Print System, you can achieve cable-free connection between the UP-991AD/UP-971AD, mobile C-arm, and other hospital imaging modalities with a compatible wireless capability.

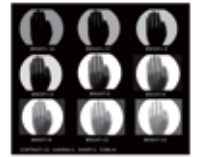
This is ideal for busy clinical environments, where modalities are constantly being moved between different ORs and examination rooms.

This all-in-one wireless printing solution also resolves the problem of limited space on medical carts, allowing connection between a medical imaging modality and an 'off-cart' printer without requiring a lengthy USB cable.



Visual Print Quality Control

Optimum print settings can be compared and chosen from a 'collage' print of nine pictures with different values for brightness, contrast, tone or sharpness.



Example ("BRIGHT"=0)

Quick Guide Print

Quick instruction guides for different print operations can be selected via the front control panel. They can be printed out for easy reference without needing to refer to the user manual.*3

*1 This function is available only on models with a USB 5V output port, manufactured in March 2017 or later. To check compatibility for wireless use, please contact your nearest Sony office or an authorized dealer.

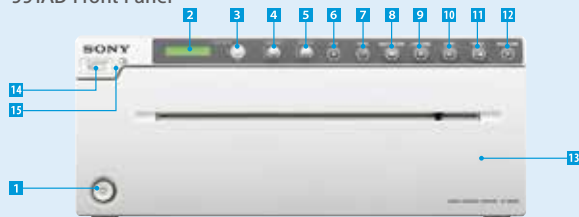
*2 Product availability of the UPA-WU10 may vary depending on the sales area.

*3 English only.

For more details, please contact your nearest Sony office or an authorized dealer.

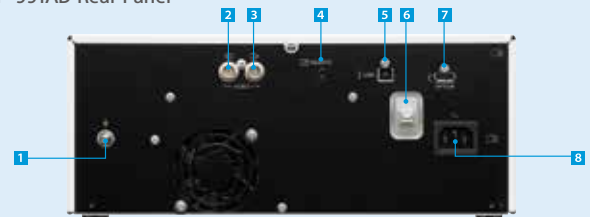
Front and Rear Panels

UP-991AD Front Panel



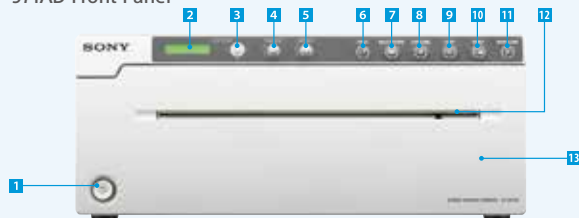
- | | |
|--|--------------------------------|
| 1 Power on/off switch | 9 CAPTURE button |
| 2 Printer window display (LCD: liquid crystal display) | 10 COPY button |
| 3 Menu lever | 11 PRINT button |
| 4 CONTRAST (contrast) dial | 12 OPEN/CLOSE button |
| 5 BRIGHT (brightness) dial | 13 Paper door |
| 6 CUT button | 14 USB Flash Drive terminal |
| 7 FEED button | 15 USB Flash Drive access lamp |
| 8 MULTI PICTURE (multi-picture) button | |

UP-991AD Rear Panel



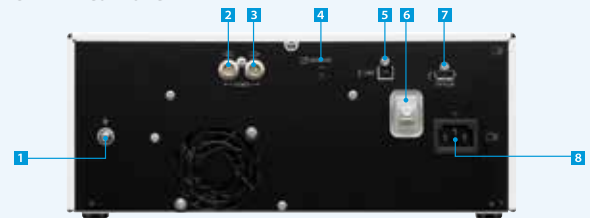
- | | |
|---|-----------------------------------|
| 1 Equipotential terminal | 5 USB connector (4-pin connector) |
| 2 VIDEO IN (input) connector (BNC type) | 6 USB Cable Clamper |
| 3 VIDEO OUT (output) connector (BNC type) | 7 OPTION terminal |
| 4 REMOTE connector | 8 AC IN connector |

UP-971AD Front Panel



- | | |
|--|----------------------|
| 1 Power on/off switch | 8 CAPTURE button |
| 2 Printer window display (LCD: liquid crystal display) | 9 COPY button |
| 3 Menu lever | 10 PRINT button |
| 4 CONTRAST (contrast) dial | 11 OPEN/CLOSE button |
| 5 BRIGHT (brightness) dial | 12 Paper Cutter |
| 6 FEED button | 13 Paper door |
| 7 MULTI PICTURE (multi-picture) button | |

UP-971AD Rear Panel



- | | |
|---|-----------------------------------|
| 1 Equipotential terminal | 5 USB connector (4-pin connector) |
| 2 VIDEO IN (input) connector (BNC type) | 6 USB Cable Clamper |
| 3 VIDEO OUT (output) connector (BNC type) | 7 OPTION terminal |
| 4 REMOTE connector | 8 AC IN connector |

Specifications

	UP-991AD	UP-971AD
Printing Method	Direct thermal printing	
Resolution	325 dpi	
Gradations	8 bits (256 levels) processing	
Picture Elements	Digital: 7680 x 2560 dots Video NTSC: 720 x 504 dots Video PAL: 720 x 604 dots	
Picture Area	DIGITAL: 600 x 200 mm (23 5/8 x 7 7/8 inch) (Max) VIDEO: STD NTSC: 182 x 144 mm PAL: 188 x 140 mm SIDE NTSC: 244 x 184 mm PAL: 244 x 183 mm	
Paper Size	Paper width of 210 mm (8 1/4 inches)	
Printing Time	Approx. 8 seconds/image (in standard mode)	
Picture Memory	Digital: 2816 x 7680 x 8 bits Video: 6 frames (720 x 608 x 8 bits for one frame)	
Interface	USB terminal (type A) for USB flash drive (X1) Hi-Speed USB (USB 2.0) (x1) VIDEO INPUT: BNC type (X1) NTSC or PAL composite video signals 1.0Vp-p, 75ohm (NTSC/PAL automatically discriminated) VIDEO OUTPUT: BNC type (x1) Loop-through REMOTE: Stereo mini jack (x1)	-
Printer Driver Software *	Microsoft Windows 10 32/64, 8 32/64, 7 32/64, Vista 32/64, XP 32/64	
Power Requirements	AC 100 V to 240 V, 50/60 Hz	
Input Current	2.9 A to 1.2 A	
Operating Temperature	5°C to 35°C (41°F to 95°F)	
Operating Humidity	20% to 80% (no condensation allowed)	
Storage and Transport Temperature	-20°C to +60°C (-4°F to +140°F)	
Storage and Transport Humidity	20% to 80%	
Dimensions (W x H x D) **	316 x 132.5 x 265 mm (12 1/2 x 5 1/4 x 10 1/2 inch)	
Mass	7 kg (15lb 7oz)	
Supplied Accessories	Print Media (1), Thermal head cleaning sheet (1), CD-ROM (1), Before Using this Printer (1), Service Contact List (1)	

* Sony does not guarantee proper operation in all system environments. ** The values for dimensions are approximate.

This product is distributed to the US (FDA) and EU (MDR) as a medical device and satisfies product safety standards (e.g. IEC 60601-1)***.

*** For more details, please contact your nearest Sony sales office or an authorized dealer.

Optional Accessories



FS-24
Foot Switch



UPA-WU10
Consists of the UPA-WU10T (Transmitter) and
UPA-WU10R (Receiver)



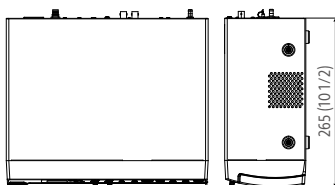
UPP-210HD
Thermal Print Media (High Density)
Paper size: 210 mm (W) x 25 m



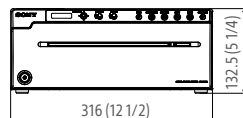
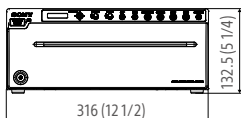
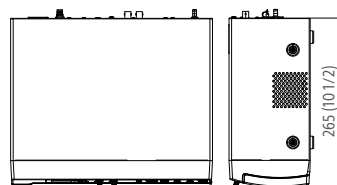
UPP-210SE
Thermal Print Media (Normal)
Paper size: 210 mm (W) x 25 m

Dimensions

UP-991AD



UP-971AD



Unit: mm (inches)

Distributed by

©2022 Sony Corporation. All rights reserved.

Reproduction in whole or in part without written permission is prohibited.

Features, design, and specifications are subject to change without notice.

The values for mass and dimension are approximate.

Some images in this document are simulated.

"SONY" is a registered trademark of Sony Corporation.

"NUCLEUS", "A.I.M.E." and "BRAVIA" are trademarks of Sony Corporation.

All other trademarks are the property of their respective owners.

Please visit Sony's professional website or contact your Sony representative for specific models available in your region.